

CITY OF LAWRENCEVILLE, GEORGIA

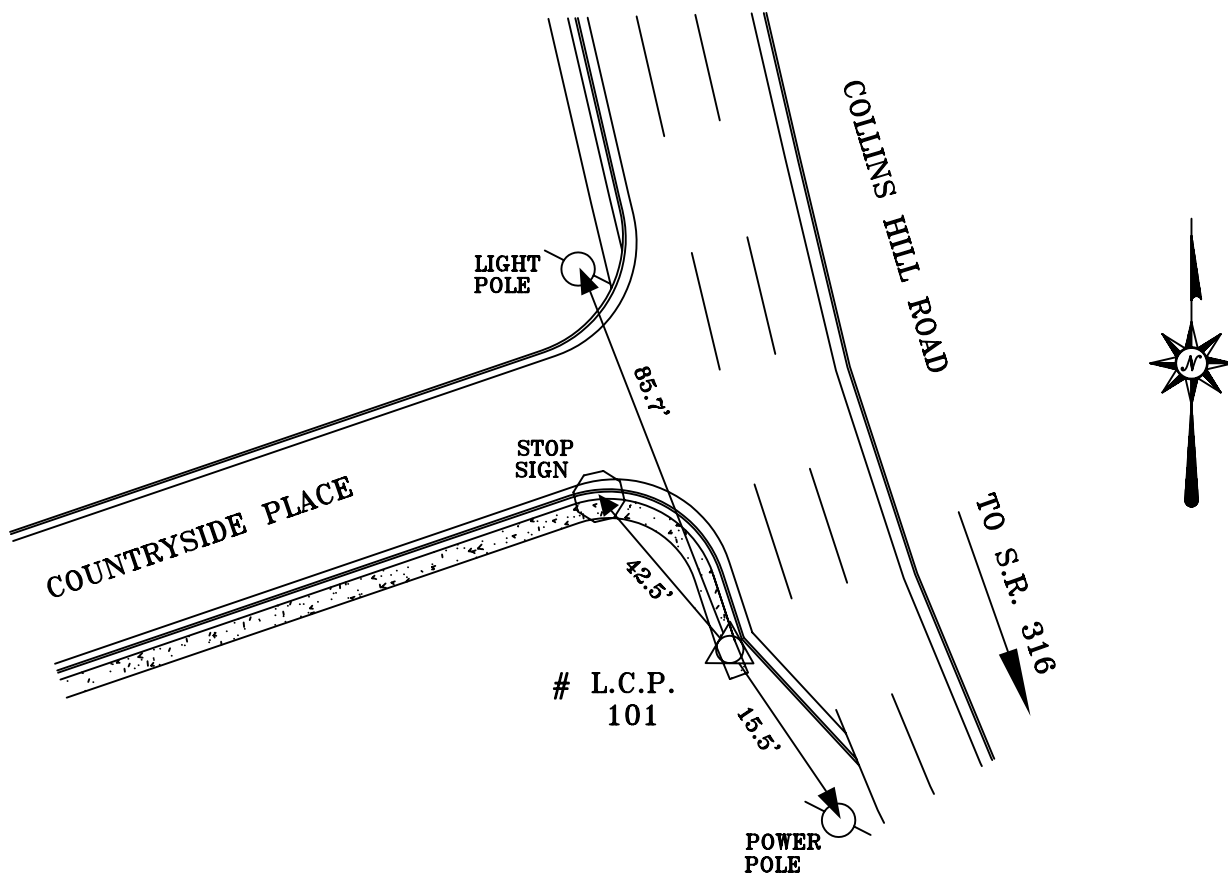
DESIGNATION: 101

HEIGHT: 300.4343 METERS 985.675 FEET

S.P.C. GA. W. METERS NORTH 442,367.0972  
FEET 1,451,332.718

EAST 714,300.3134  
2,343,500.278

SCALE 0.99992588



DESCRIPTION:  
THE STATION IS A BRASS DISC SET IN THE SIDEWALK ON THE WESTERLY SIDE OF COLLINS HILL ROAD SOUTH OF COUNTRY SIDE PLACE. TO REACH THE STATION FROM THE INTERSECTION OF S.R. 316 AND COLLINS HILL ROAD, PROCEED NORTHERLY, ALONG COLLINS HILL ROAD FOR APPROXIMATELY 1.3 MILES TO THE STATION ON THE LEFT.

NTS



CITY OF  
LAWRENCEVILLE, GA.  
Telephone: (770) 963-5123

REFERENCE:  
LAWRENCEVILLE CONTROL POINT # 101