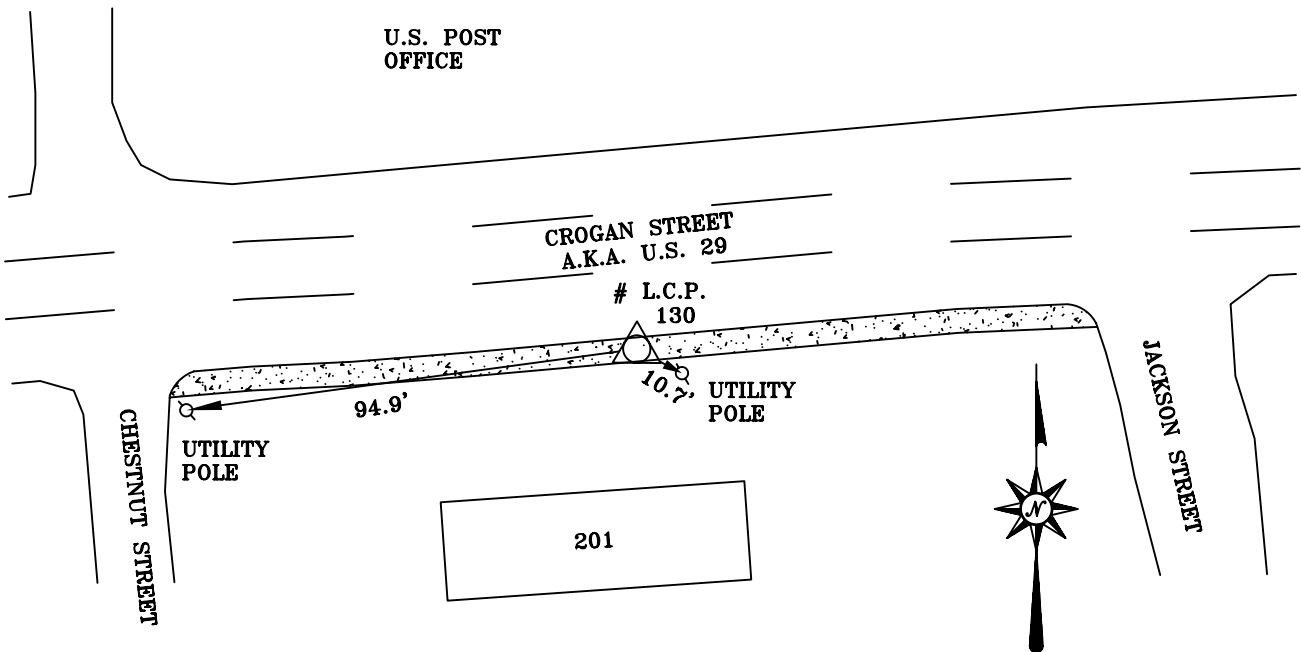


CITY OF LAWRENCEVILLE, GEORGIA

DESIGNATION: 130

HEIGHT: 325.1381 METERS 1,066.724 FEET

S.P.C. GA. W.	METERS	NORTH	EAST	SCALE
	FEET	438,680.8060	716,657.5048	0.999902571
		1,439,238.611	2,351,233.830	



DESCRIPTION:
THE STATION IS A BRASS CAP SET IN THE SIDE WALK ON THE SOUTHERLY SIDE OF CROGAN STREET (a.k.a. U.S. 29). THE STATION IS LOCATED IN FRONT OF # 201 CROGAN STREET AND OPPOSITE THE U.S. POST OFFICE LAWRENCEVILLE BRANCH.

NTS



CITY OF
LAWRENCEVILLE, GA.
Telephone: (770) 963-5123

REFERENCE:
LAWRENCEVILLE CONTROL POINT # 130