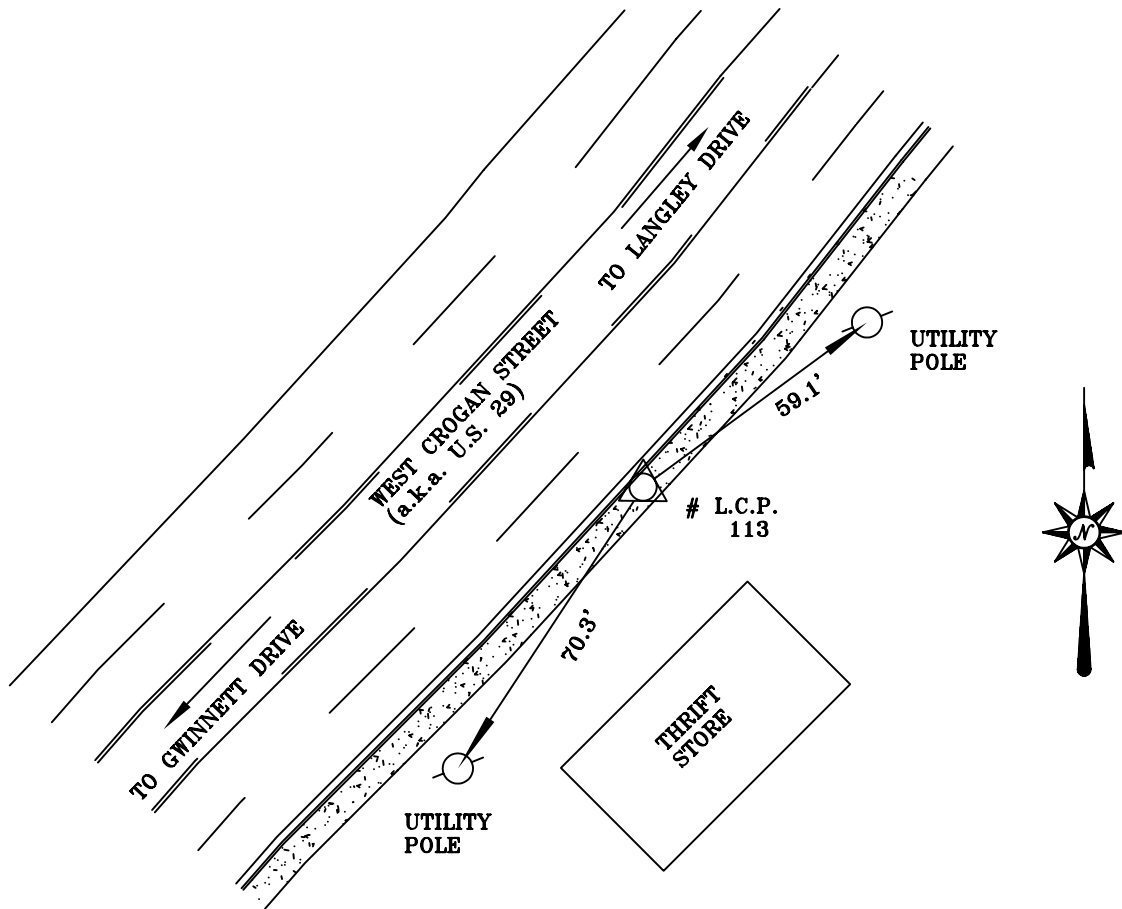


CITY OF LAWRENCEVILLE, GEORGIA

DESIGNATION: 113

HEIGHT: 326.6438 METERS 1,074.664 FEET

S.P.C. GA. W.	NORTH	EAST	SCALE
METERS 438,068.5146	715,507.3174		0.999903035
FEET 1,437,229.785	2,347,460.257		



DESCRIPTION:
THE STATION IS A BRASS DISC SET IN SIDEWALK ON THE SOUTHEASTERLY SIDE OF WEST CROGAN STREET (a.k.a. U.S. 29). TO REACH THE STATION FROM THE INTERSECTION OF WEST CROGAN STREET AND GWINNETT DRIVE PROCEED NORTHEASTERLY, FROM SAID INTERSECTION, ALONG WEST CROGAN STREET FOR APPROXIMATELY 0.1' MILES TO THE STATION ON THE RIGHT.

NTS



CITY OF
LAWRENCEVILLE, GA.
Telephone: (770) 963-5123

REFERENCE:
LAWRENCEVILLE CONTROL POINT # 113