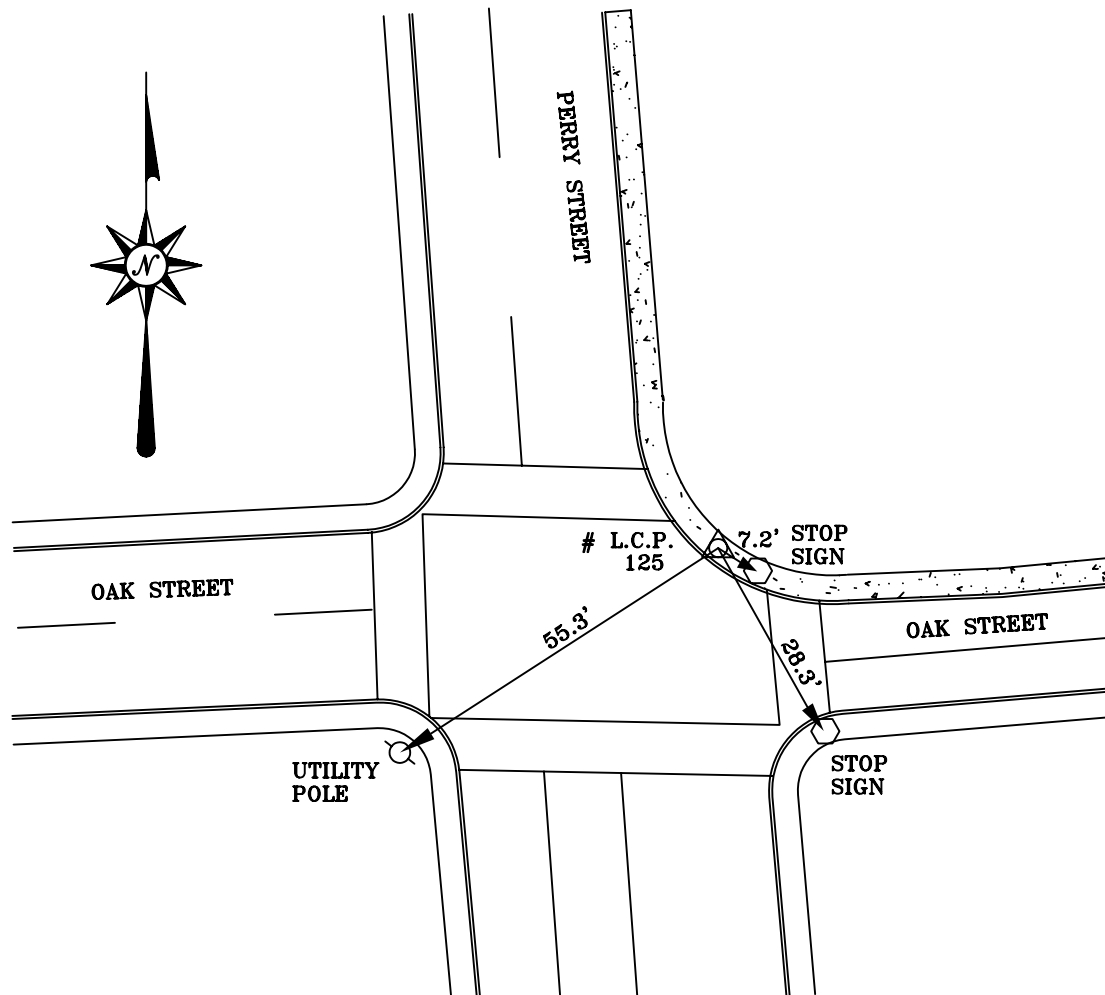


CITY OF LAWRENCEVILLE, GEORGIA

DESIGNATION: 125

HEIGHT: 339.8856 METERS 1,115.108 FEET

S.P.C. GA. W.	METERS	NORTH	EAST	SCALE
	FEET	438,927.5025	716,352.6249	0.999902596
		1,440,047.981	2,350,233.570	



DESCRIPTION:  
THE STATION IS A BRASS DISC SET IN THE SIDEWALK ON THE NORTHEASTERLY INTERSECTION OF PERRY STREET AND OAK STREET.

NTS



CITY OF  
LAWRENCEVILLE, GA.  
Telephone: (770) 963-5123

REFERENCE:  
LAWRENCEVILLE CONTROL POINT # 125