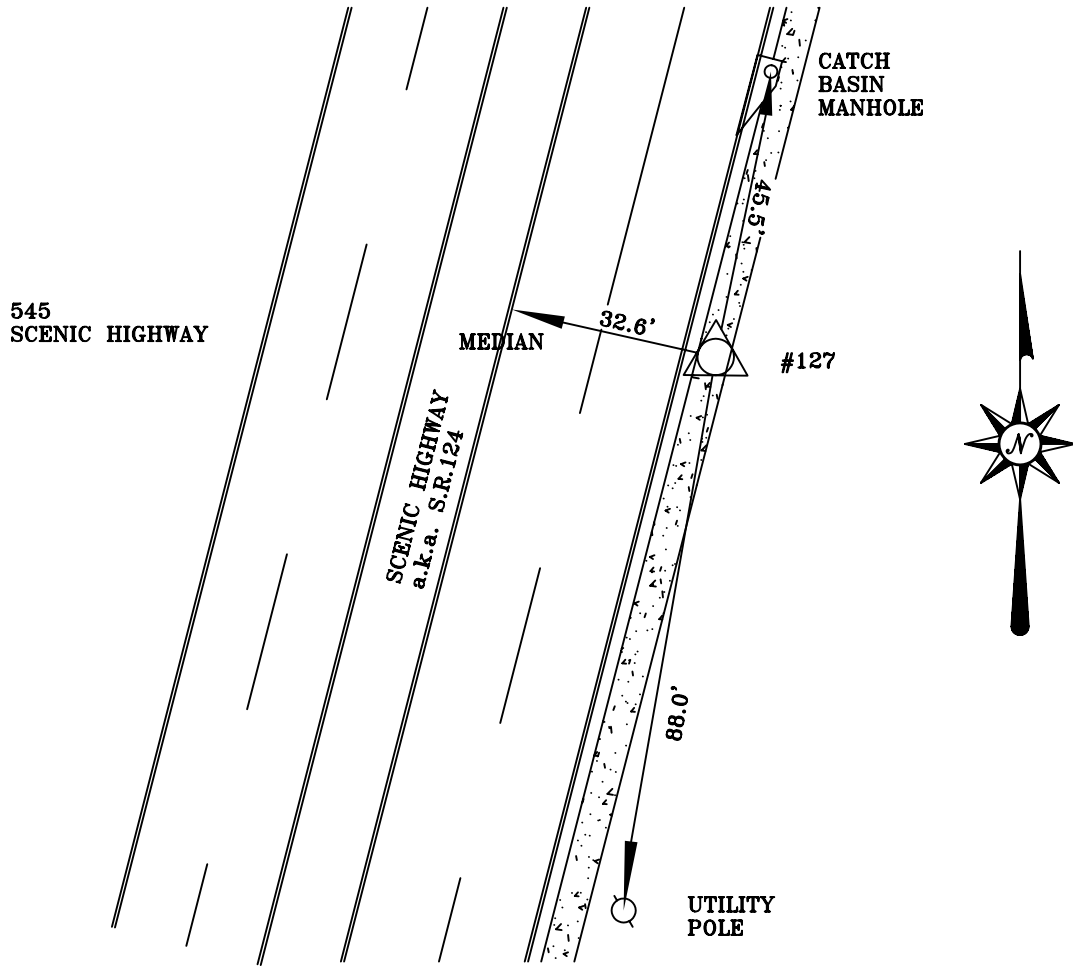


CITY OF LAWRENCEVILLE, GEORGIA

DESIGNATION: 127

HEIGHT: 320.5344 METERS 1,051.620 FEET

		NORTH		EAST	SCALE
S.P.C. GA. W.	METERS	435,721.0510		715,779.1523	
	FEET	1,429,528.148		2,348,352.102	0.999903604



DESCRIPTION:
 THE STATION IS A BRASS DISC SET IN THE SIDEWALK ON THE EASTERLY SIDE OF SCENIC HIGHWAY (a.k.a. S.R. 124). THE STATION IS LOCATED OPPOSITE # 545 SCENIC HIGHWAY. TO REACH THE STATION FROM THE INTERSECTION OF SCENIC HIGHWAY AND MOON ROAD PROCEED NORTHERLY, ALONG SCENIC HIGHWAY FOR APPROXIMATELY 0.15 MILES TO THE STATION ON THE LEFT.

NTS



CITY OF
 LAWRENCEVILLE, GA.
 Telephone: (770) 963-5123

REFERENCE:
 LAWRENCEVILLE CONTROL POINT # 127